



Well 7 Project

Addendum to SARCCUP Joint Projects FEIR

*Engineering, Operations, and Water Resources Committee
Meeting – September 3, 2024*



STAFF REQUEST

Adopt Resolution 3303 Adopting Addendum to Santa Ana River Conservation and Conjunctive Use Program (SARCCUP) Joint Projects Final Environmental Impact Report (FEIR) for the Well 7 Site Location Selection

ADDENDUM PROCESS

-
1. **Determine the Need for an Addendum** – Staff prepares an initial assessment of the proposed change and evaluates if changes would require a new EIR, or Amendment to or an Addendum to the adopted FEIR
 2. **Prepare the Addendum** – Staff prepares document that describes proposed change(s), potential impact(s), and consistency with prior adopted FEIR
 3. **Board considers proposed addendum** – EOWR Committee Review
 4. **Approval of the Addendum** – Full Board adopts Addendum
 5. **Public Accessibility** – Addendum is made available to the public by normal notification of Board Actions and posting on Western's Website.
 6. **Documentation** – The addendum is attached to the FEIR in the official District files

Figure 1. Study Area

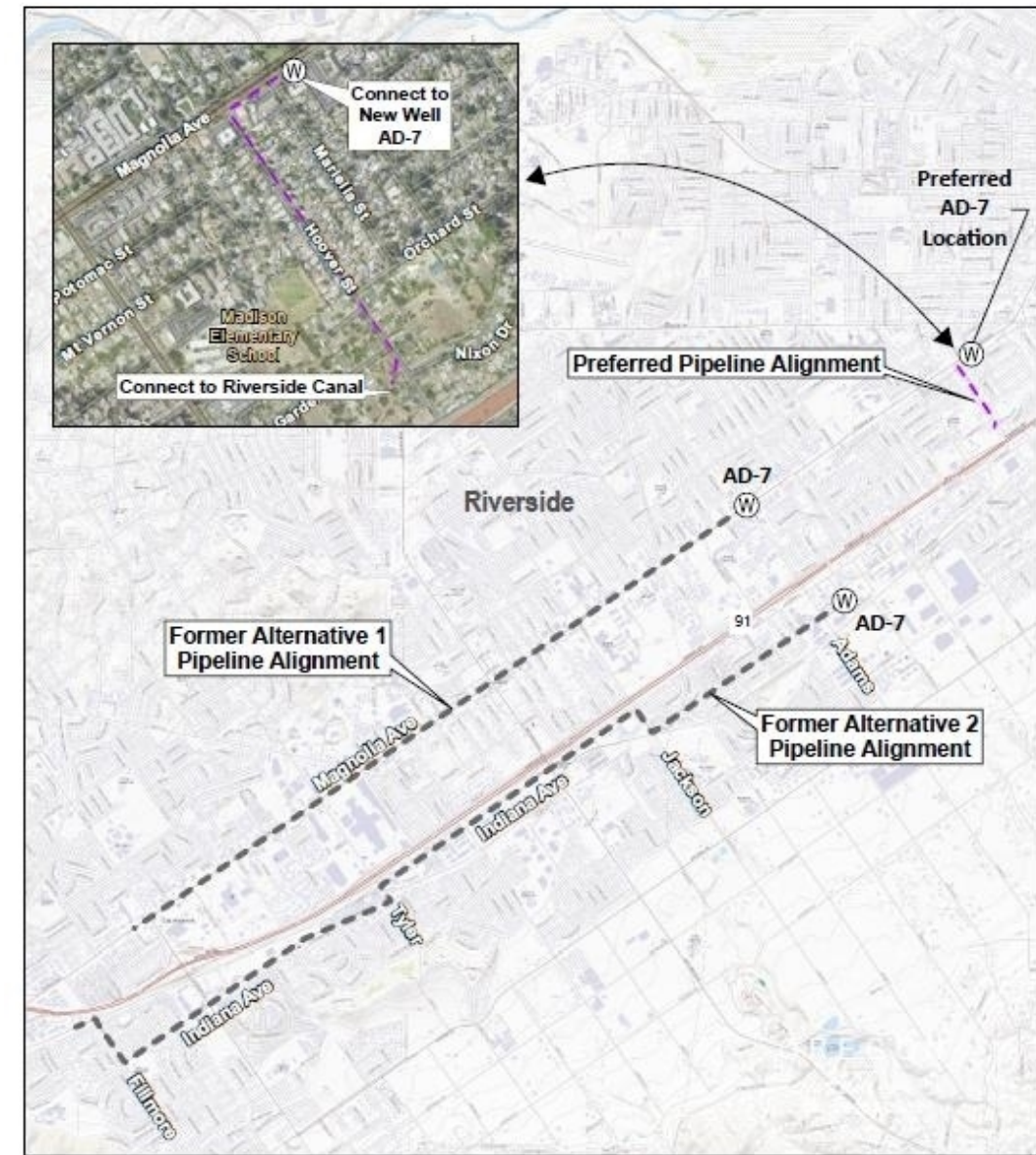
This aerial map displays the study area for the proposed pipelines. The map includes a north arrow and a scale bar indicating 0 to 2,000 feet. The legend identifies the following features:

- Well
- Alternative 1 Pipeline
- Alternative 2 Pipeline

The map shows the locations of three wells: AD-6, AD-6, and AD-7. The proposed pipelines are shown in green (Alternative 1) and purple (Alternative 2). Major roads and streets are labeled, including Mitchell Ave, Campbell Ave, Jones Ave, Wells Ave, California Ave, Garfield St, Adams St, Indiana Ave, Monroe St, Lincoln Ave, Irving St, Duffin Ave, Cleveland Ave, Victoria Ave, Harrison St, Myer St, Tyler St, Cochrane Ave, Collett Ave, Easterra Ave, Norwood Ave, Gramercy Pl, Bushnell Ave, Hedrick Ave, Hole Ave, and Magnolia Ave. Highway 91 is also shown.

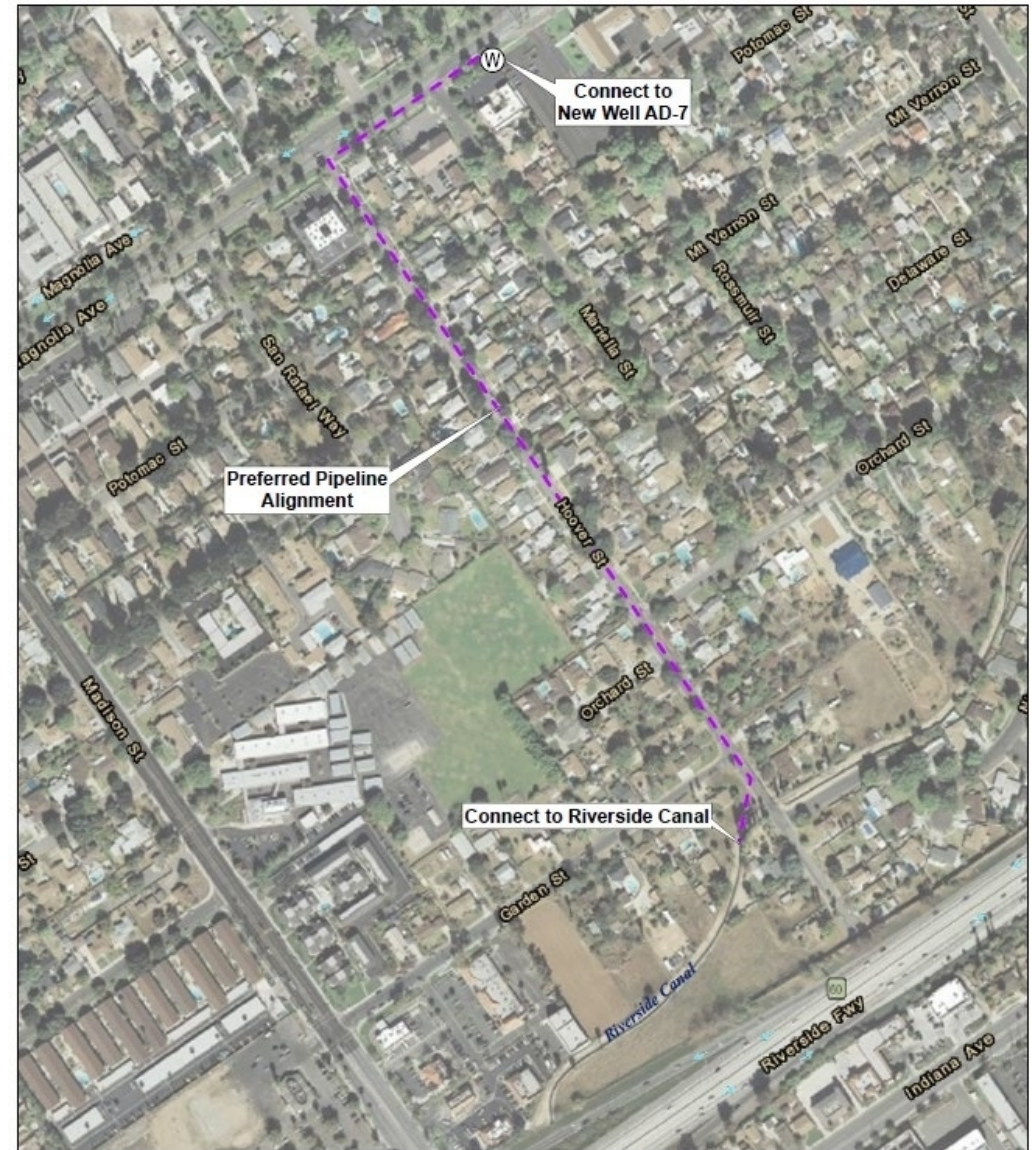
REVISED WELL 7 LOCATION

- Well Site Moved from CVS Parking Lot to an Unused Portion of a Church Parking Lot (approximately 1.4 miles)
- Pipeline Alignment from Well 7 will be shortened from approximately 4 to 0.5 miles



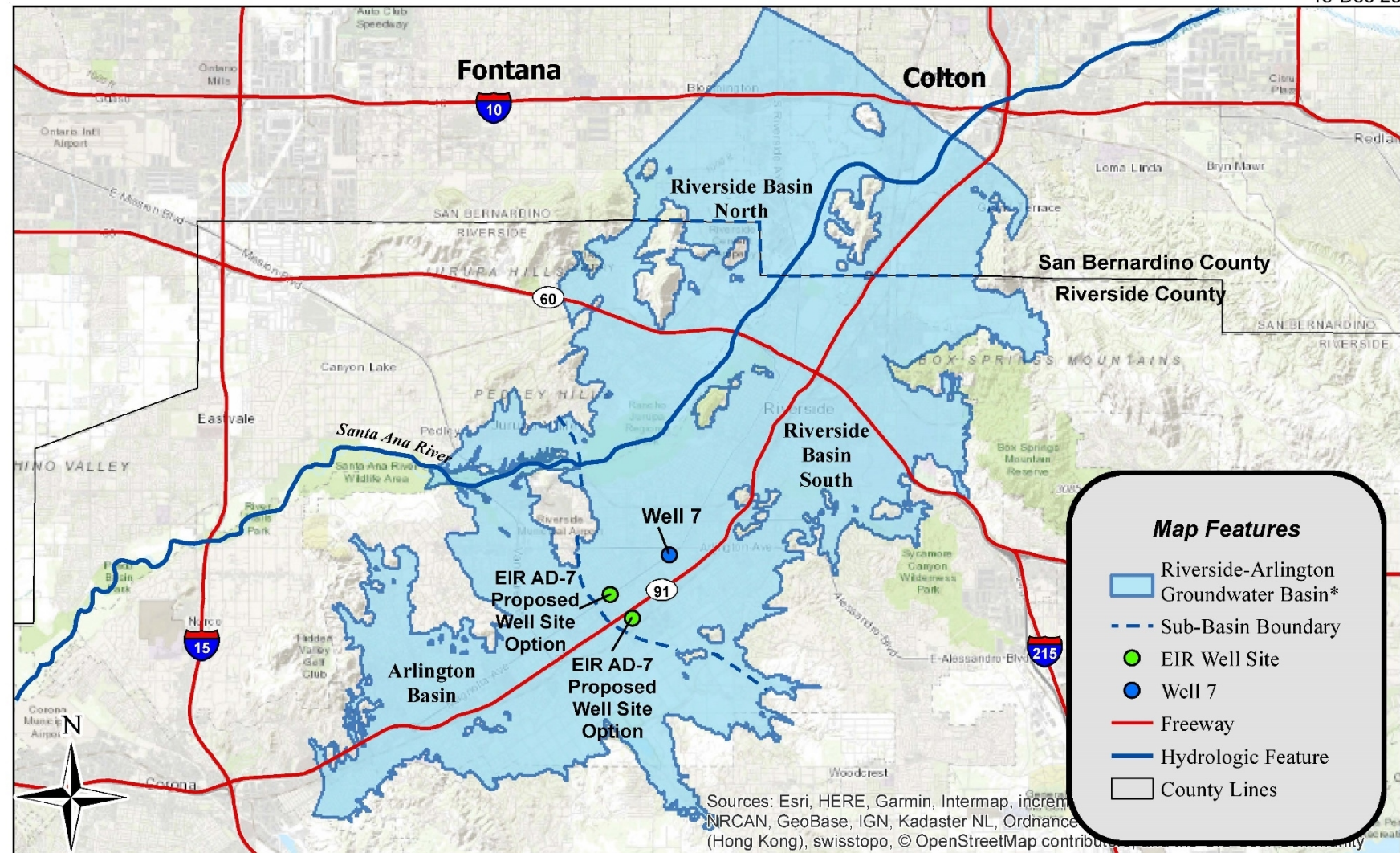
REVISED PIPELINE ROUTE

- Pipeline will be Routed in Existing Streets to the Riverside Canal
- Water will be Delivered to Western Water's Non-potable Customers
 - Non-potable customers include the Riverside National Cemetery, landscaping, plant nurseries, school fields, etc.

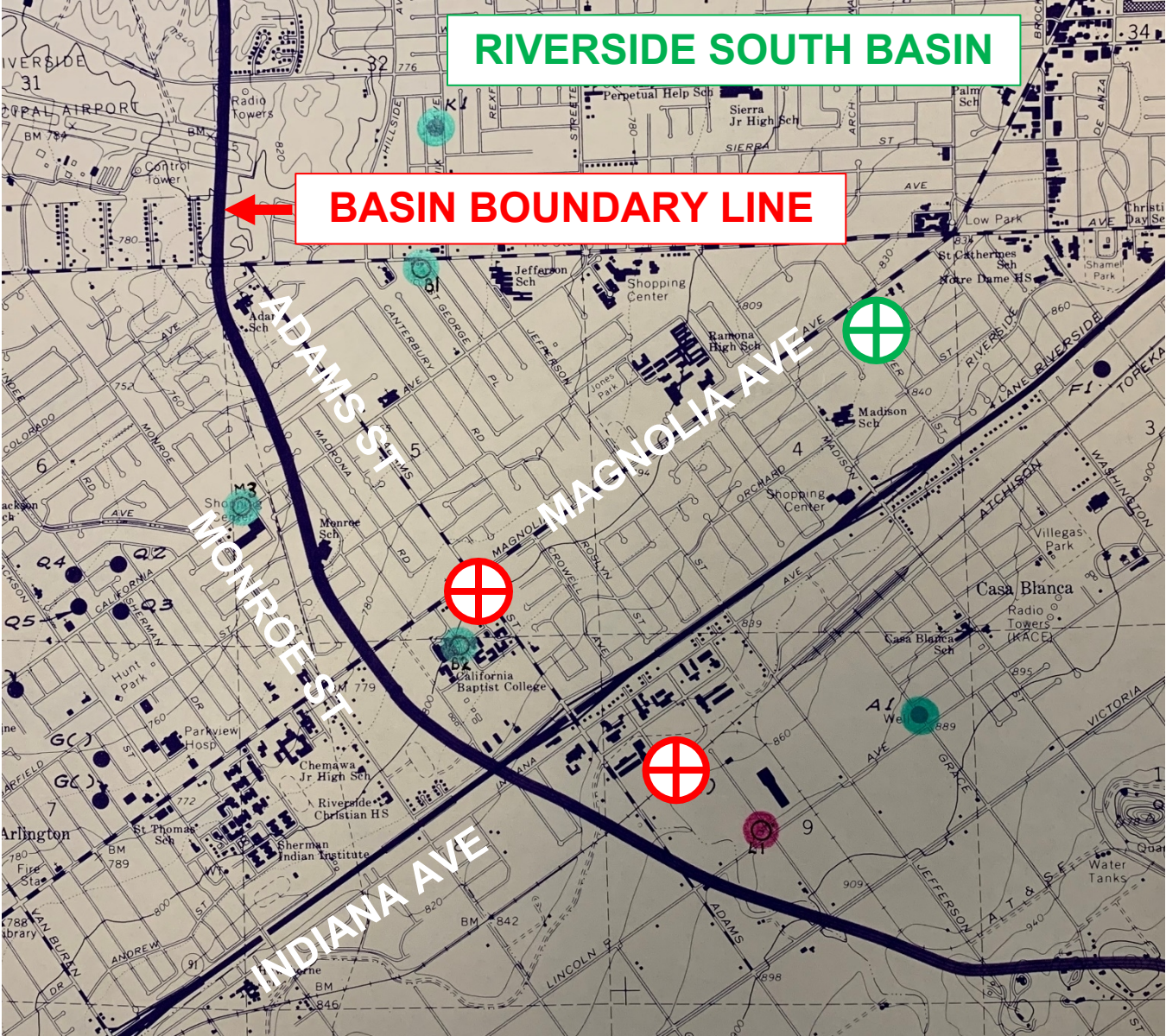


SOURCE OF SUPPLY

Although the Well 7 Site Location will be Moved, the Groundwater Source remains the Riverside Basin South as recognized by the 1969 Western-San Bernardino Judgement



SOURCE OF SUPPLY



Thank you

